



In 2015, Prof. K. Lenhard Rudolph was awarded the Deutscher Krebspreis in the category of "Experimental Research", granted by the German Cancer Society and the German Cancer Foundation.

*His work has significantly affected today's understanding of telomeres and their role in the emergence of cancer.*

Prof. Matthias Doppelstein in his laudation during the ceremony for the award of the Deutscher Krebspreis to Prof. K. Lenhard Rudolph.

**Scientific Director**

Prof. K. Lenhard Rudolph

**Administrative Director**

Dr. Daniele Barthel

**Board of Trustees**

Head: Burkhard Zinner

**Scientific Advisory Board**

Head: Prof. Moshe Yaniv

**Leibniz-Institute on Aging - Fritz Lipmann Institute (FLI)**

Beutenbergstraße 11  
 D-07745 Jena, Germany  
 Tel +49(0)3641-65-6000  
 Fax +49(0)3641-65-6351  
 info@leibniz-fli.de  
 www.leibniz-fli.de



**Cancer in Old Age**

**Cancer Research at FLI**



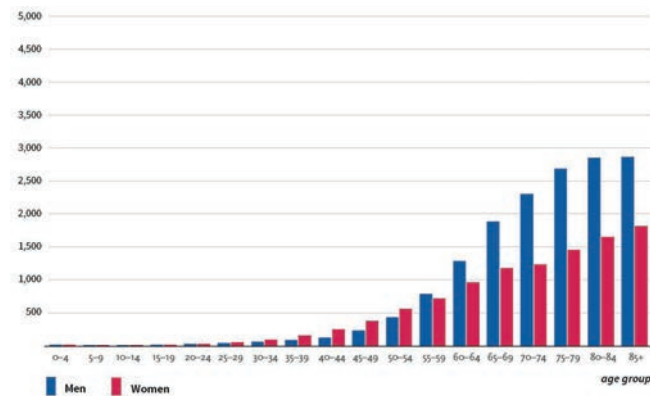
# Cancer is an Age-Associated Disease

Causes for the age-associated emergence of cancer are manifold and complex. And research is still far away from understanding the underlying processes in detail.

However, it is known, that aging is linked to a diminishing capability of the human body to regenerate, to changes in the endocrine system (hormone system) and a weakening immune system – all this contributing to the emergence and growth of tumors.

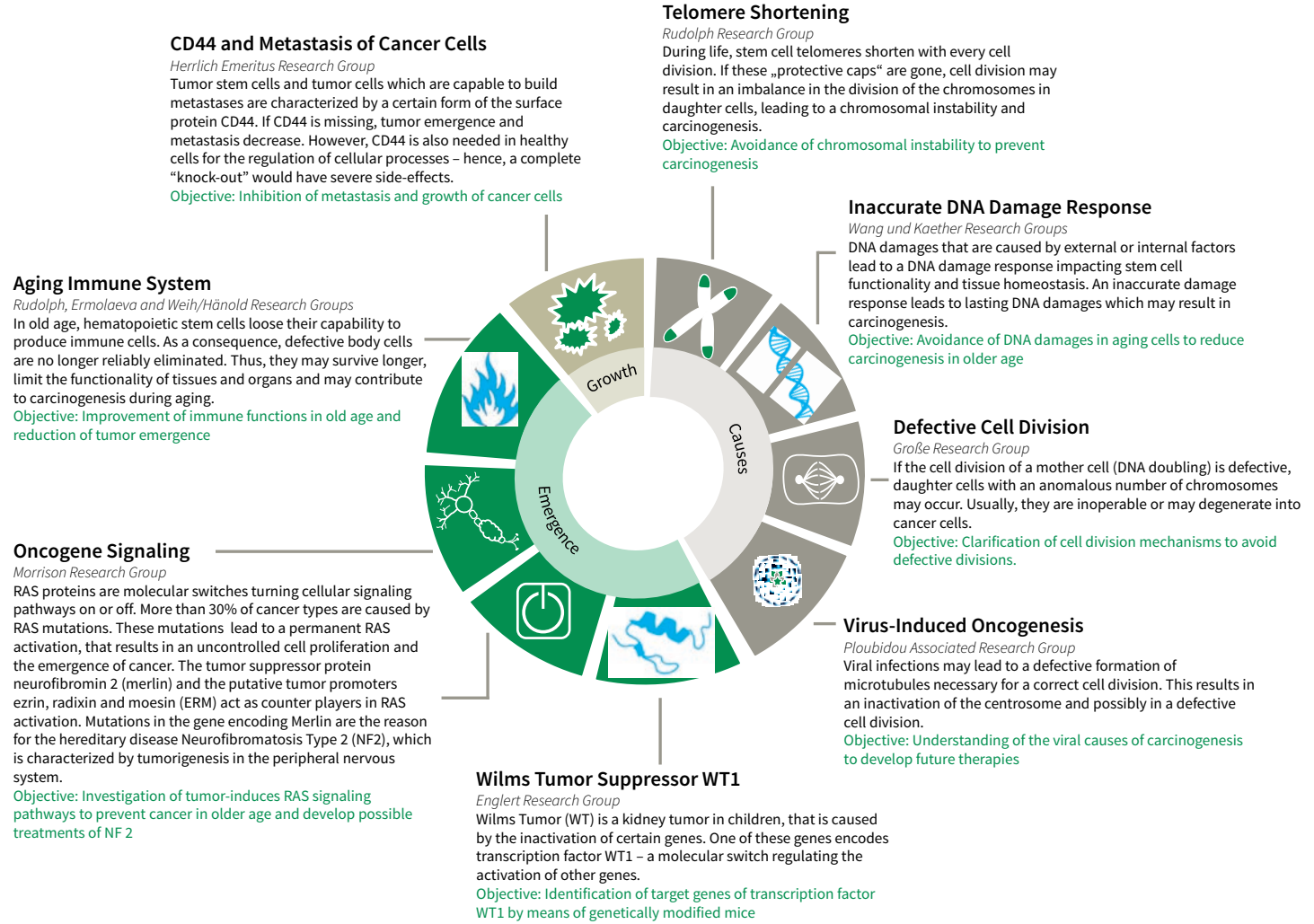
Furthermore, aging cells accumulate cellular damages caused by a myriad of defective processes, as e.g. inaccurate DNA damage repair, defective cell division, or faults in cell senescence and cell death. If defective cells gain a growth advantage over healthy cells (clonal dominance), the emergence of tumors may be a severe result.

Number of new cancer cases in Germany by age and sex (every 100.000 inhabitants)



Source: Krebs in Deutschland 2009-2010, 9th edition, Robert Koch Institute [ed.] 2013.

# Cancer Research at Leibniz Institute on Aging (FLI) - At a Glance



In various cooperation projects and funded by several foundations and associations, cancer research has established as one of the key research foci at FLI.

